

Survey:

Example Pupil Survey - 2019

Report By:

All Respondents

Difference from:

All Respondents
98,330 Learners from 240 Primary Schools within the 'All Data' QDP national benchmark.

Report style:

Combined Graphical, Rated, Questionnaire order

Filtered by:

All Respondents

Respondents:

103

Example 4 of 4: Graphical with External Benchmark Report

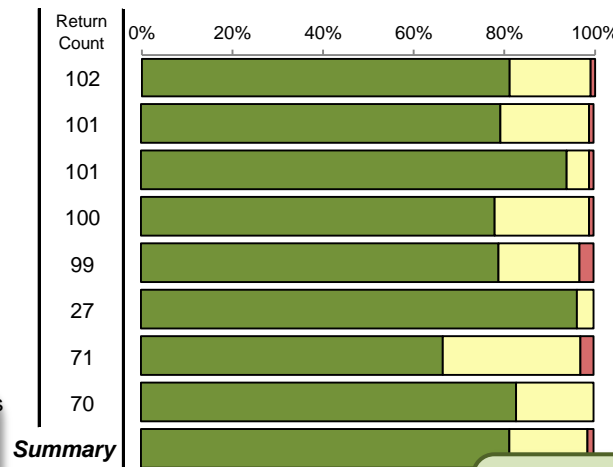


Shows strengths and areas of concern in your school against all other similar profiled schools in QDP National Benchmark who have asked the same question (A = strength; D = concern).

Description of chosen sample be it All Respondents, school, subject, class, gender, age etc. Difference from chosen benchmark, sample details and the title of the survey.

The School

- 1 This is a good school that meets my needs
- 2 I enjoy school very much
- 3 I have friends at this school
- 4 The school teaches me how to keep healthy
- 5 I am encouraged to take exercise and keep fit
- 6 I am encouraged to eat healthily
- 7 Helped to manage feelings and feel good



Rating	Difference	Agree%	Distance Travelled	Quartile	External Benchmark
89		98	-1	A	+5
86		95	+2	A	+9
97		99	+5	A	+4
85		95	-4	B	+2
84		93	=	A	+4
98		100	+1	A	+4
80		94	+6	A	+6
91		100	+2	A	+10
88		96	+1	A	+5

Questions arranged in questionnaire order. Can also be run under inspection framework headings.

Shows the Distance Travelled from last years survey results.

- 11 I am taught well
- 12 My lessons are interesting
- 13 I enjoy my lessons
- 14 I find it easy to get on with my work in class



Rating	Difference	Agree%	Distance Travelled	Quartile	External Benchmark
96		99	+1	A	+6
88		97	+3	A	+18
88		95	=	A	+10
71		93	-2	A	+9